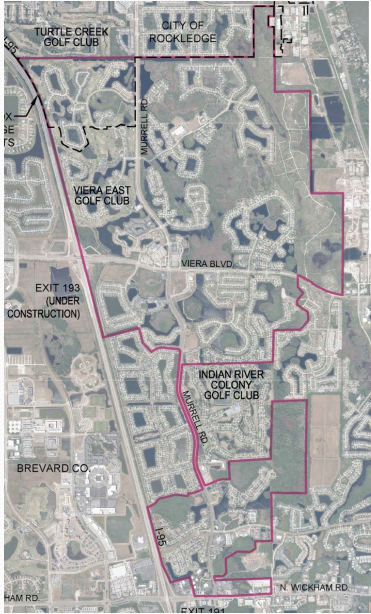


Viera East
Community Development District

VECDD and Golf Course Financial Review 2018-2023

1

Viera East Community Development District Boundaries

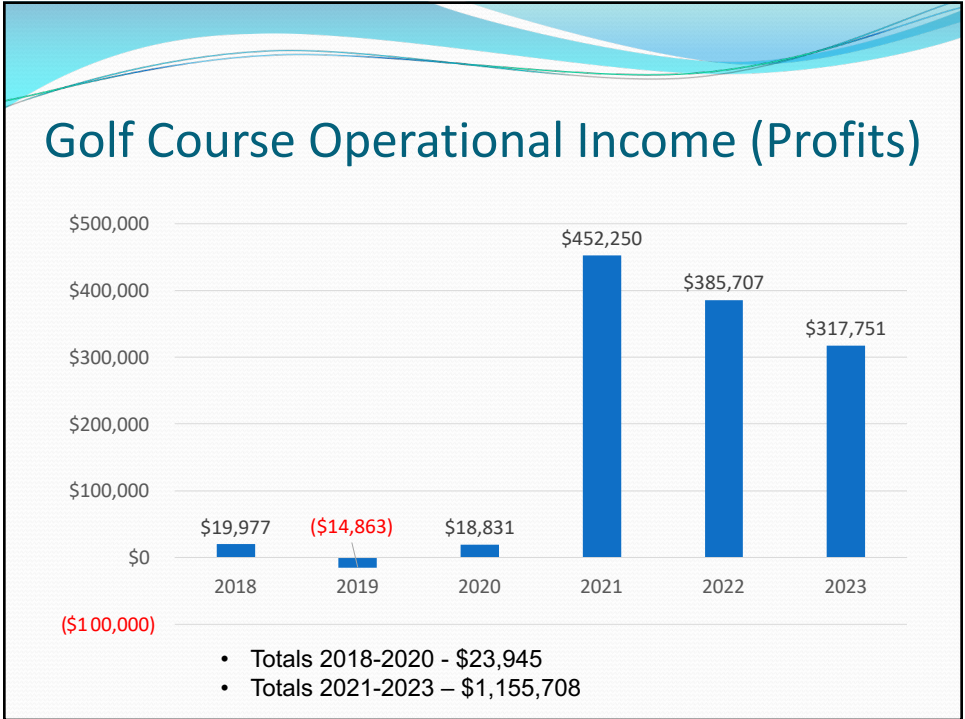


2

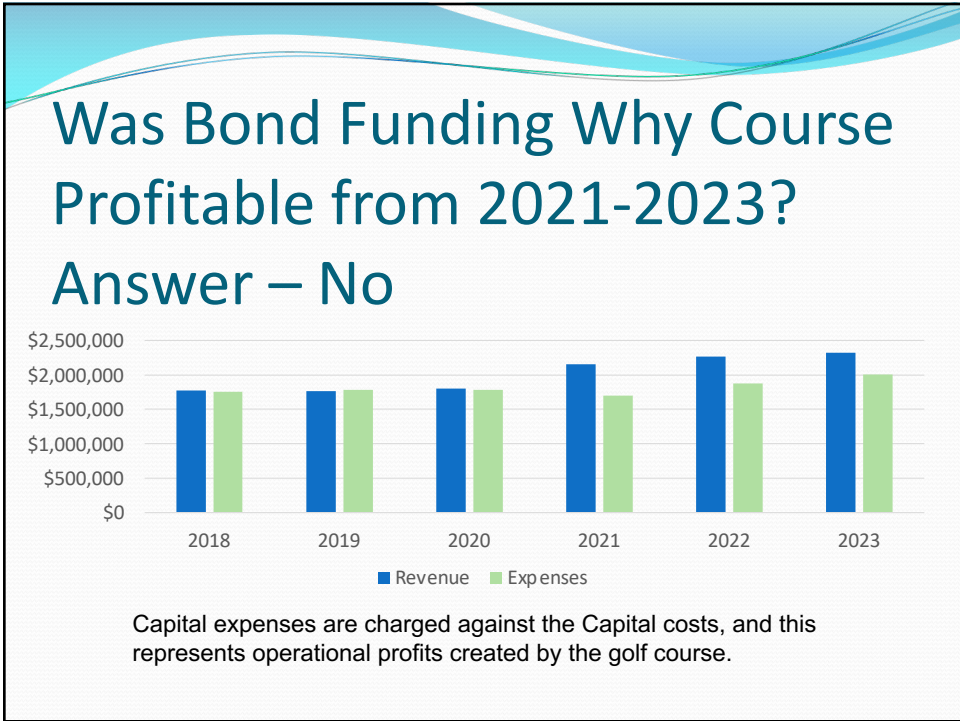
VIERA EAST COMMUNITY DEVELOPMENT DISTRICT COMPONENTS

- 31 SUBDIVISIONS/COMMUNITIES AND 4,200 RESIDENTIAL UNITS AND 205 ACRES OF COMMERCIAL
- EMPLOYS 60 STAFF MEMBERS
- CDD ASSETS FOR EVERY RESIDENT
 - FIRE LINE MAINTENANCE OF CDD PROPERTY
 - OVER 1,000 ACRES OF WETLANDS & CONSERVATION AREAS
 - SCRUB JAY HABITAT
 - 84 CDD MAINTAINED RETENTION PONDS
 - 5+ MILES OF SIDEWALKS AND BIKE PATHS
 - WOODSIDE PARK – DOG PARK AND NATURAL PLAYGROUND
 - VARIOUS INFRASTRUCTURE MAINTENANCE AREAS THROUGHOUT CDD
 - NATURAL AREA TRAILS
- CDD GOLF ASSETS
 - CDD OWNED AND MAINTAINED RESTAURANT
 - 18 HOLE CHAMPIONSHIP GOLF COURSE AND PRACTICE RANGE
- VISIT THE CDD WEBSITE: WWW.VIERAEASTCDD.COM

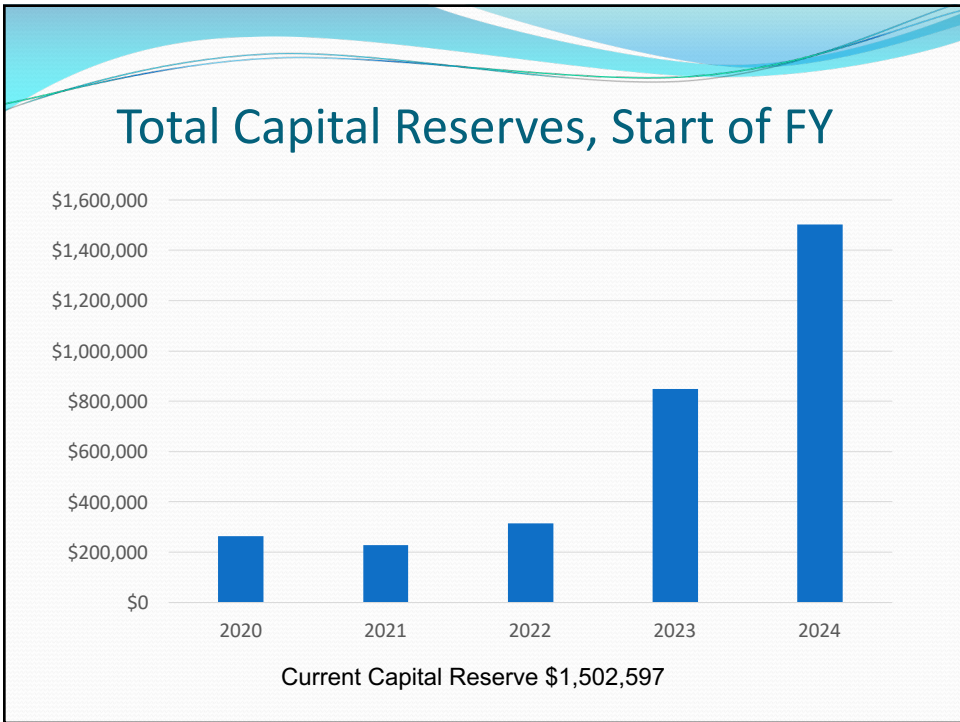
3



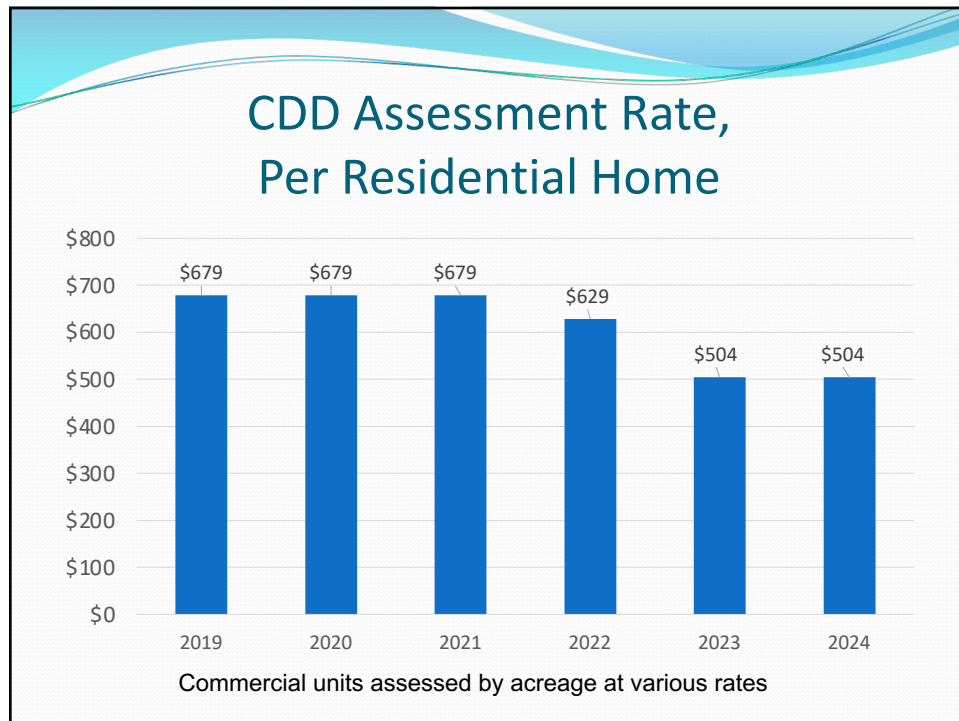
4



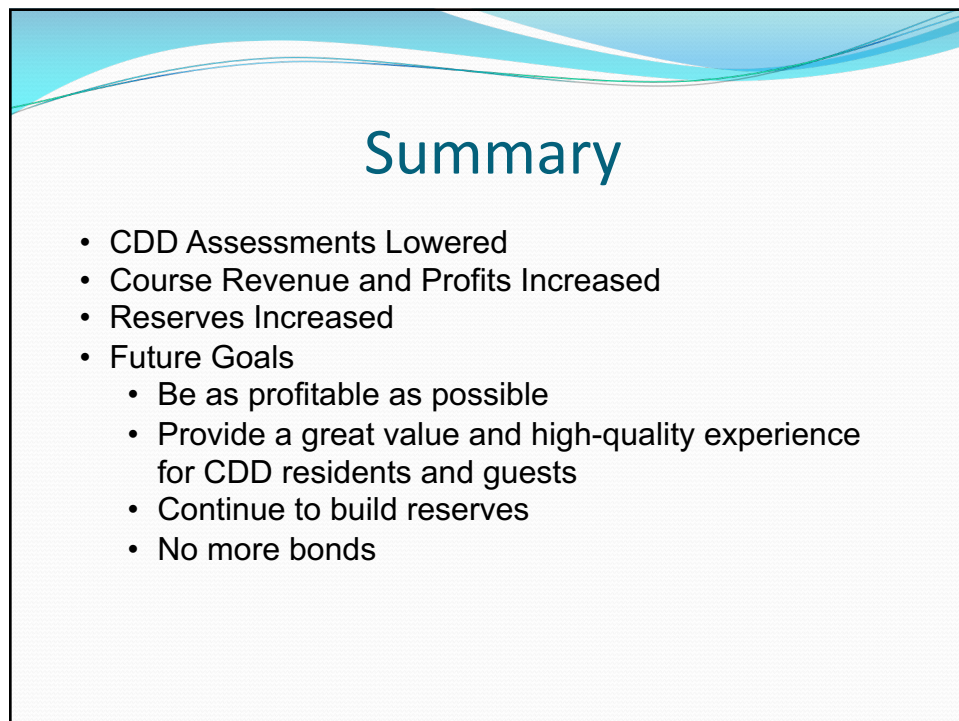
5



6



7



8